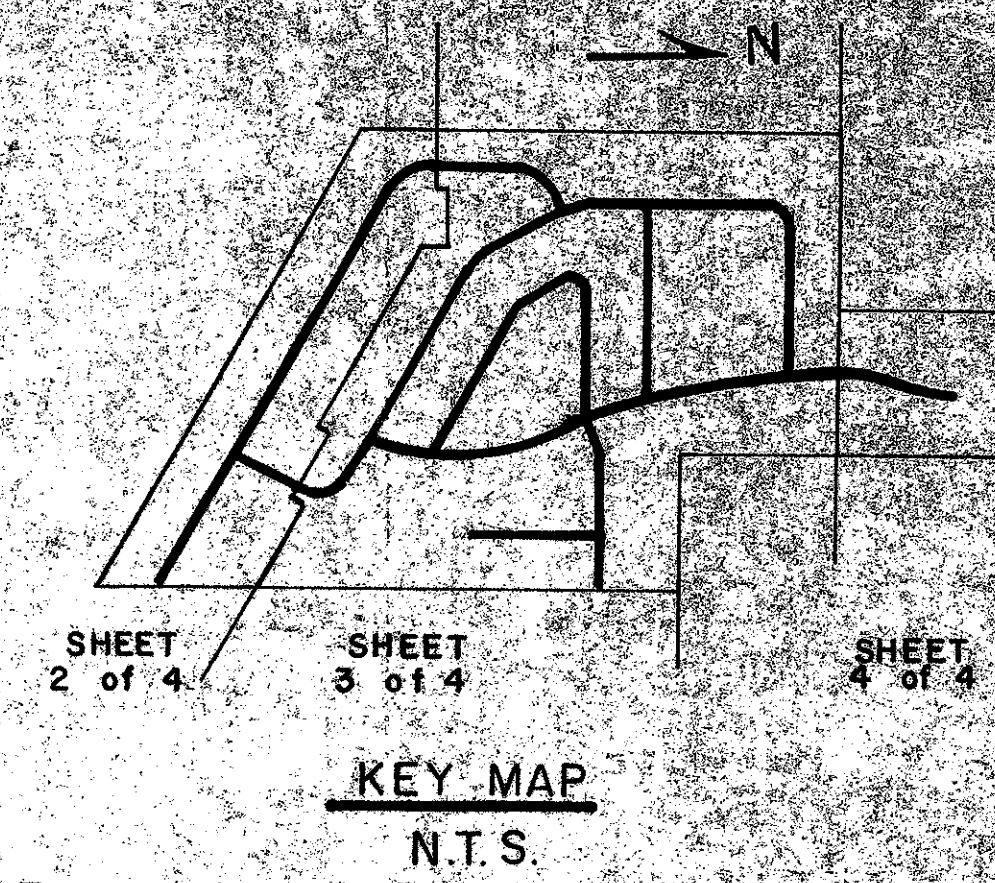


41-129

A PLANNED UNIT DEVELOPMENT
PLAT NO. 1 OF
BOCA HEIGHTS PATIO HOMES
SHEET 4 OF 4



129

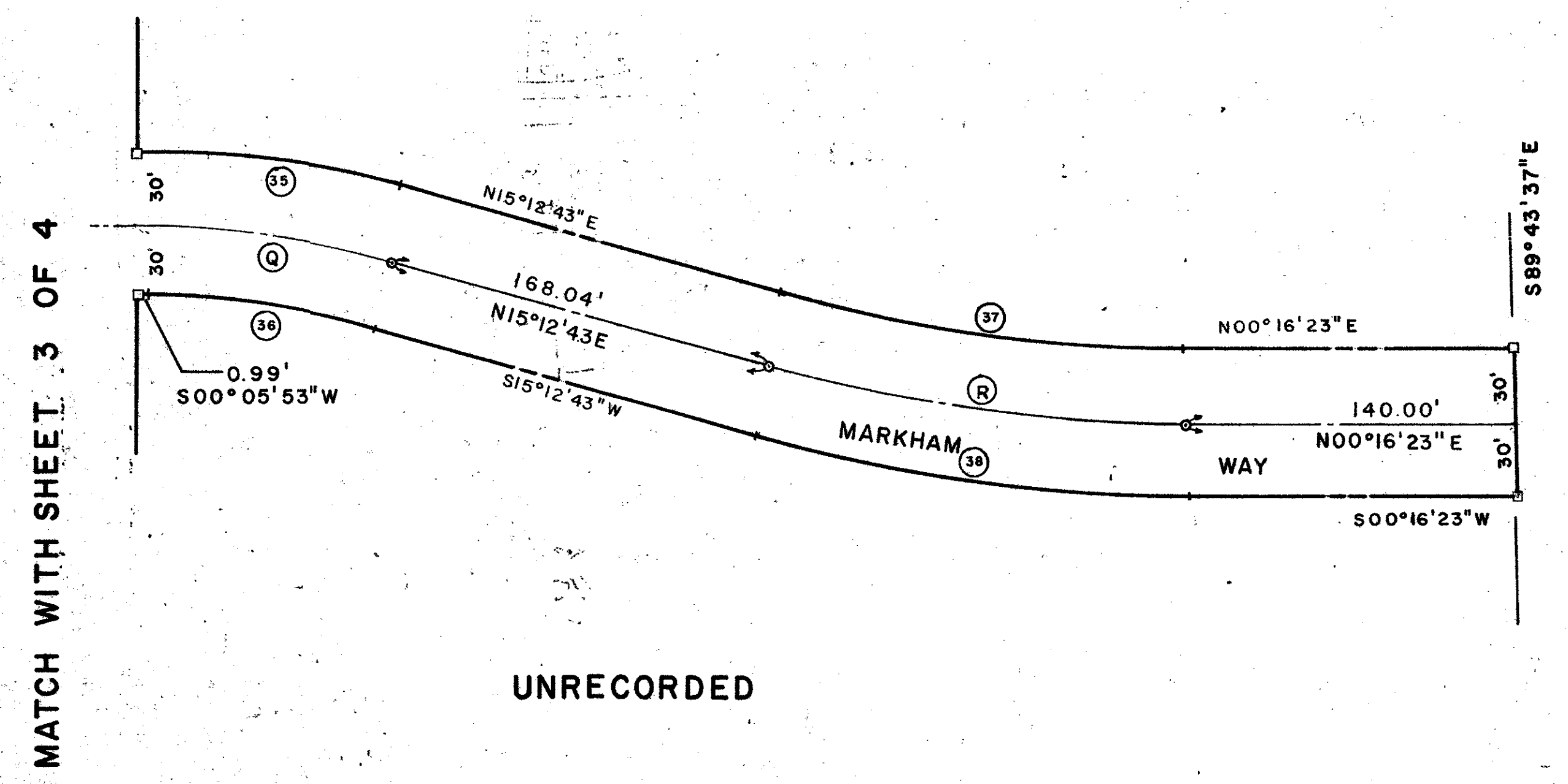


R/W CURVE DATA

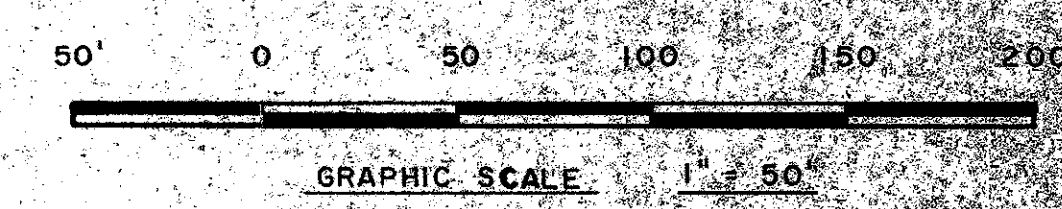
No.	A	R	T	L	L.C.
35	15°06'50"	437.65'		115.45'	115.11'
36	15°06'50"	377.65'		99.62'	99.33'
37	14°56'20"	664.49'	87.12'	173.25'	172.76'
38	14°56'20"	724.49'		188.90'	188.36'

Q CURVE DATA

No.	A	R	T	L	L.C.
Q	15°06'50"	407.65'	54.08'	107.93'	—
R	14°56'20"	694.49'	91.06'	181.08'	—



ORIOLE COUNTRY RD.



0210-001

41/129

Field Book No. Pg.	ROBERT E. OWEN & ASSOCIATES, INC. ENGINEERS · PLANNERS · SURVEYORS WEST PALM BEACH FLORIDA	A PLANNED UNIT DEVELOPMENT	Job No. 79-1199
Design R. HAYDEN		PLAT NO. 1 OF BOCA HEIGHTS PATIO HOMES	Scale 1" = 50'
Drawn G. E. TRACY			Date FEB. 1980
Checked			Sheet 4 of 4
		PALM BEACH COUNTY, FLORIDA	File No. BF-2300